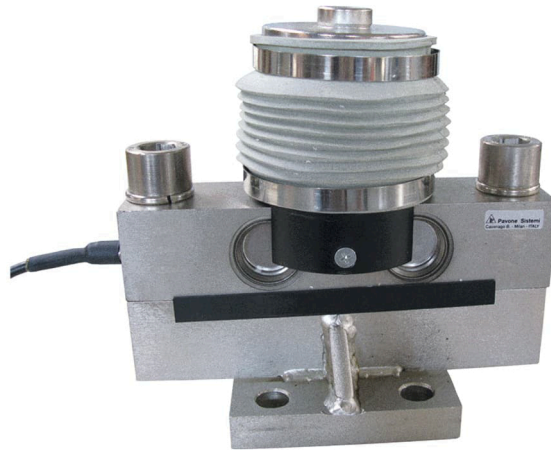


General information

PVS12620200908

The double shear beam load cell DSBZ guarantees high precision and is insensitive to lateral loads. For this reason, it is suitable for heavy industrial weighing, such as trucks and large heavy vehicles. The load cell DSBZ has a high degree of protection and guarantees excellent performance. It also comes with a 4-meter shielded cable 20 meters long.



Suggested related products

A highly performing weighing system must be accurate, perfectly calibrated and well maintained. In order to improve the load cell performance and to optimize its functioning, you may need the following products:

Weight Transmitter [DAT 1400](#)

Weight Indicator [MCT 1302](#)

Mounting kits [DE MOUNTING KIT](#)

Tester 1008 [TESTER 1008](#)

Junction Box [CGS4-C](#)

Double Shear Beam Load Cell [DDR](#)

All indicated data may be changed without notice.
All the measures indicated are expressed in millimeters (mm).

Technical specifications

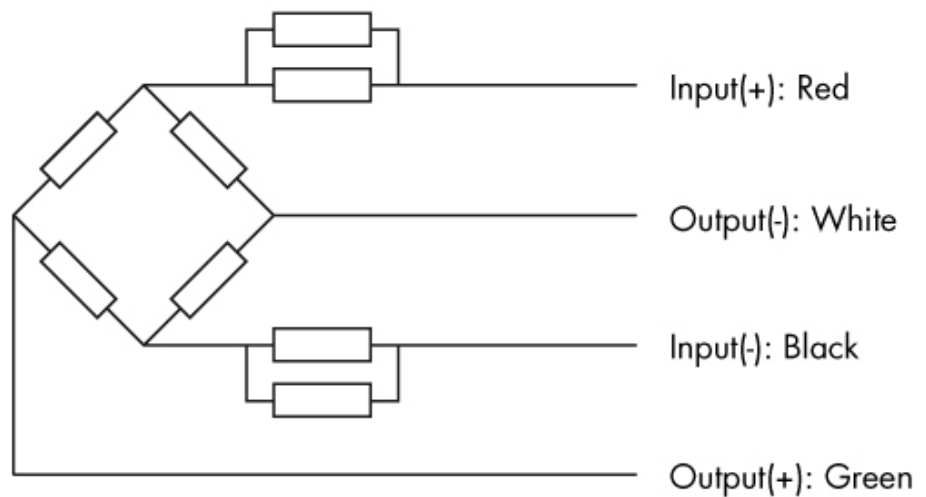
PVS12620200908

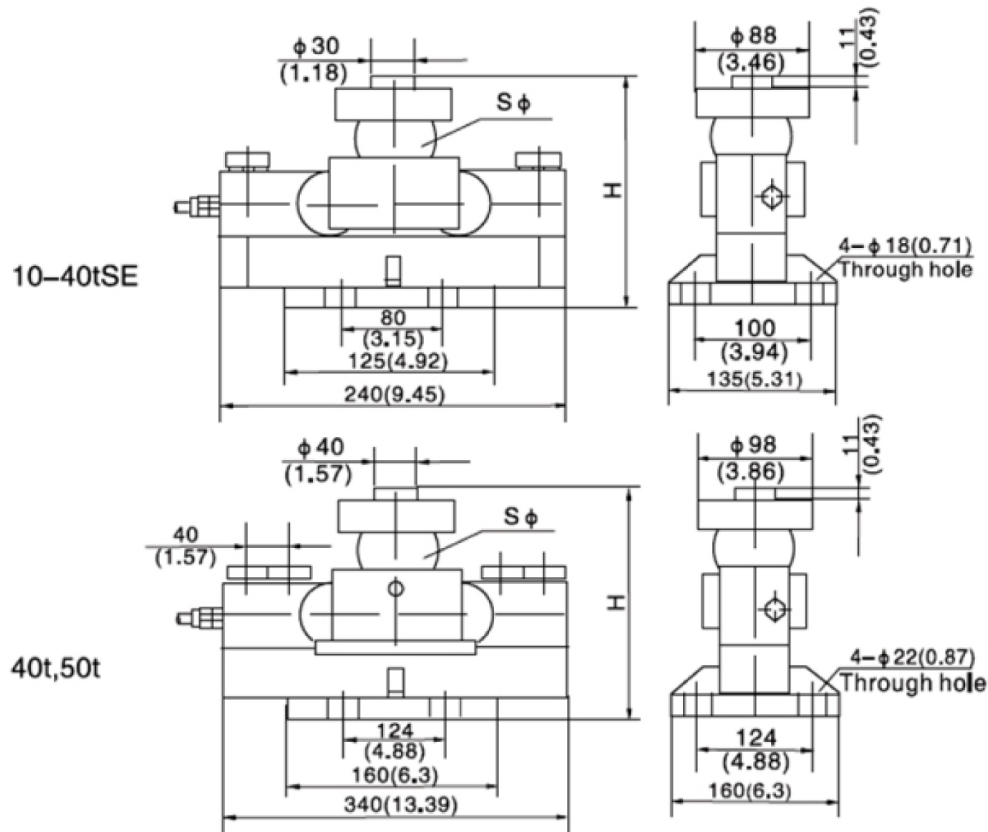
Rated load RL:	10, 20, 25, 30, 40, 50 t
Combined error:	< $\pm 0,023$ % RO
Repeatability:	± 0.01 % RO
Creep (30 minutes):	± 0.02 % RO
Safe overload:	150 % RL
Ultimate overload:	300 % RL
Safe sideload:	100 % RL
Material:	Alloy steel
Degree of protection:	IP68
Deflection:	0.6 ÷ 1.4 mm
Compensated Temperature:	-10 ÷ +40 °C
Temperature range:	-35 ÷ +65 °C
Temperature effect on zero balance:	± 0.018 % RO/10°C
Temperature effect on output:	± 0.012 % on output/10°C
Zero balance:	< $\pm 1,5$ % RO
Insulation resistance:	> 5000 M Ohm
Input resistance:	700 \pm 7 Ohm
Output resistance:	700 \pm 7 Ohm
Recommended input:	5 ÷ 12 Vdc/Vac
ATEX certified version:	II1G Ex ia II1C T4; II1D Ex iaD 20 T73°C; II3G nL IIC T4

All indicated data may be changed without notice.
 All the measures indicated are expressed in millimeters (mm).

Wiring:

- Shielded, 4 conductor cable: Ø 5,5mm.
- Standard cable length: 12m or 20m.
- Cable type and cable length or customer's own application are available on request.
- Shield not connected to element.





DIM/CAP	10T	20T-40T SE	40T, 50T
H	195 (7.68)	225 (8.86)	267 (10.51)
SØ	50 (1.97)	76 (2.99)	82 (3.22)

All indicated data may be changed without notice.
 All the measures indicated are expressed in millimeters (mm).